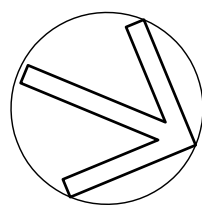
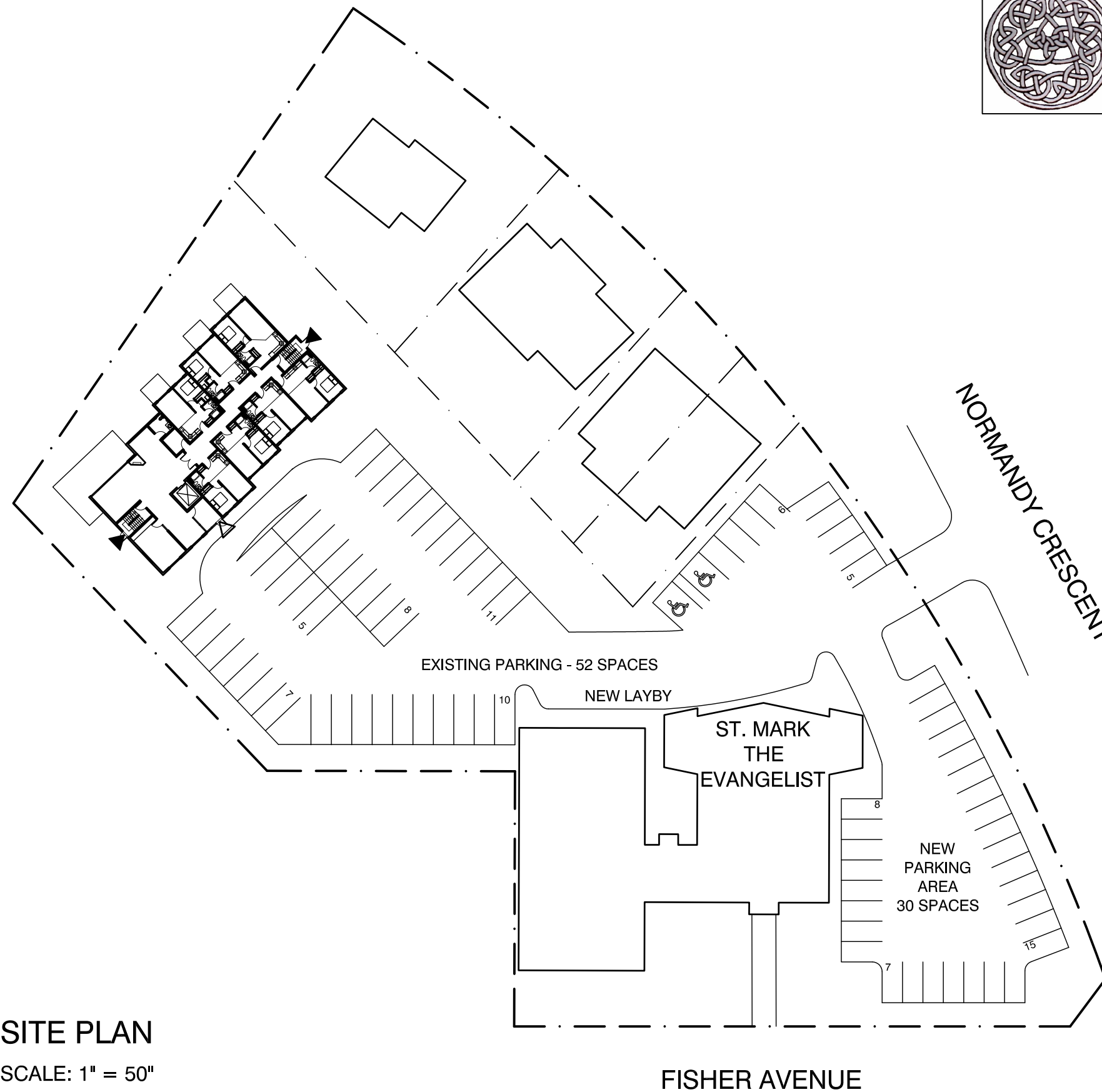


**Stewart & Associates  
Consulting Services**

Building Better Community Solutions

John Stewart McFarlane, (613) 724-4981



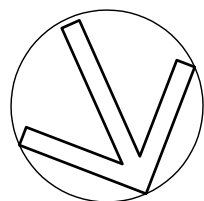
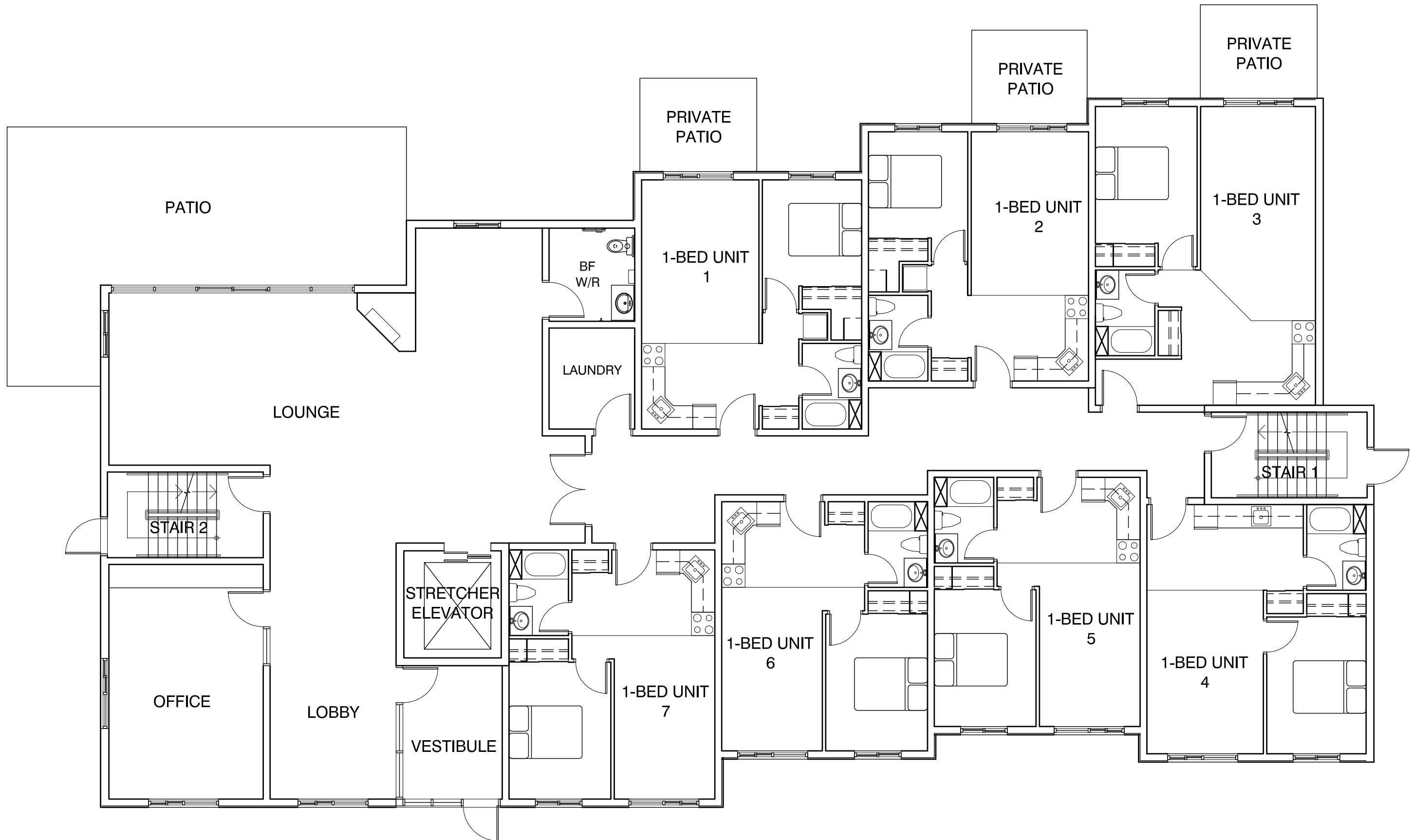
**SITE PLAN**

SCALE: 1" = 50"

**RETIREMENT HOME  
FISHER AVENUE  
OTTAWA, ONTARIO**

LEONARD KOFFMAN, ARCHITECT  
DECEMBER 11, 2009

0934

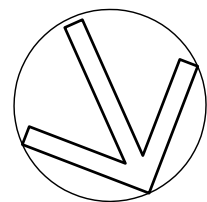
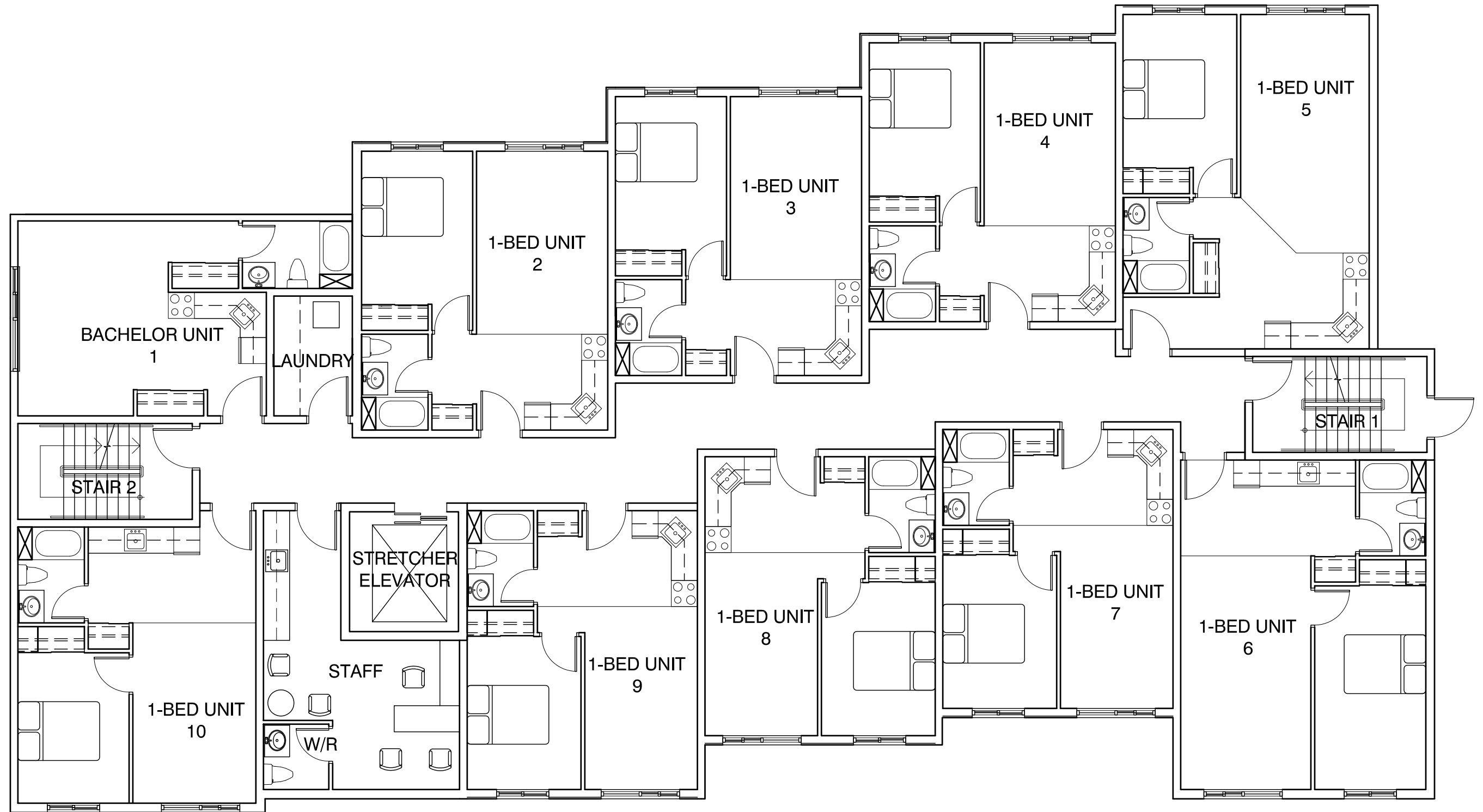


**GROUND FLOOR PLAN - 7 1-BED UNITS**

SCALE: 1/8" = 1'-0"

**RETIREMENT HOME  
FISHER AVENUE  
OTTAWA, ONTARIO**

LEONARD KOFFMAN, ARCHITECT  
DECEMBER 11, 2009 0934

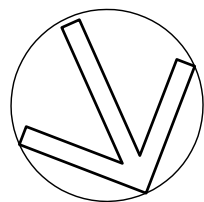
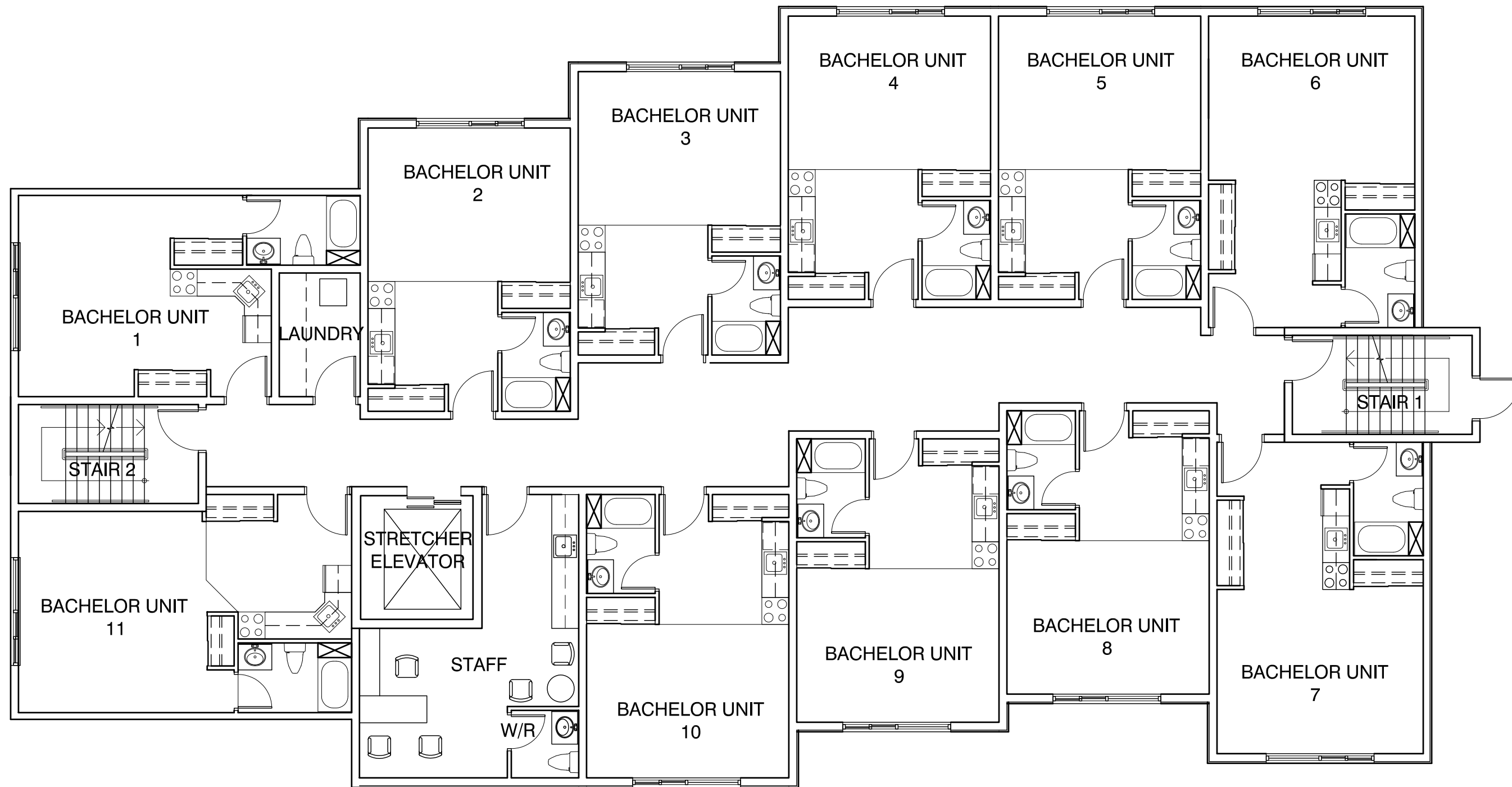


2nd & 3rd FLOOR PLAN; 1 BACHELOR, 9 1-BED

SCALE: 1/8" = 1'-0"

**RETIREMENT HOME  
FISHER AVENUE  
OTTAWA, ONTARIO**

LEONARD KOFFMAN, ARCHITECT  
DECEMBER 11, 2009 0934

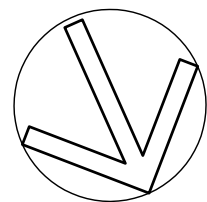
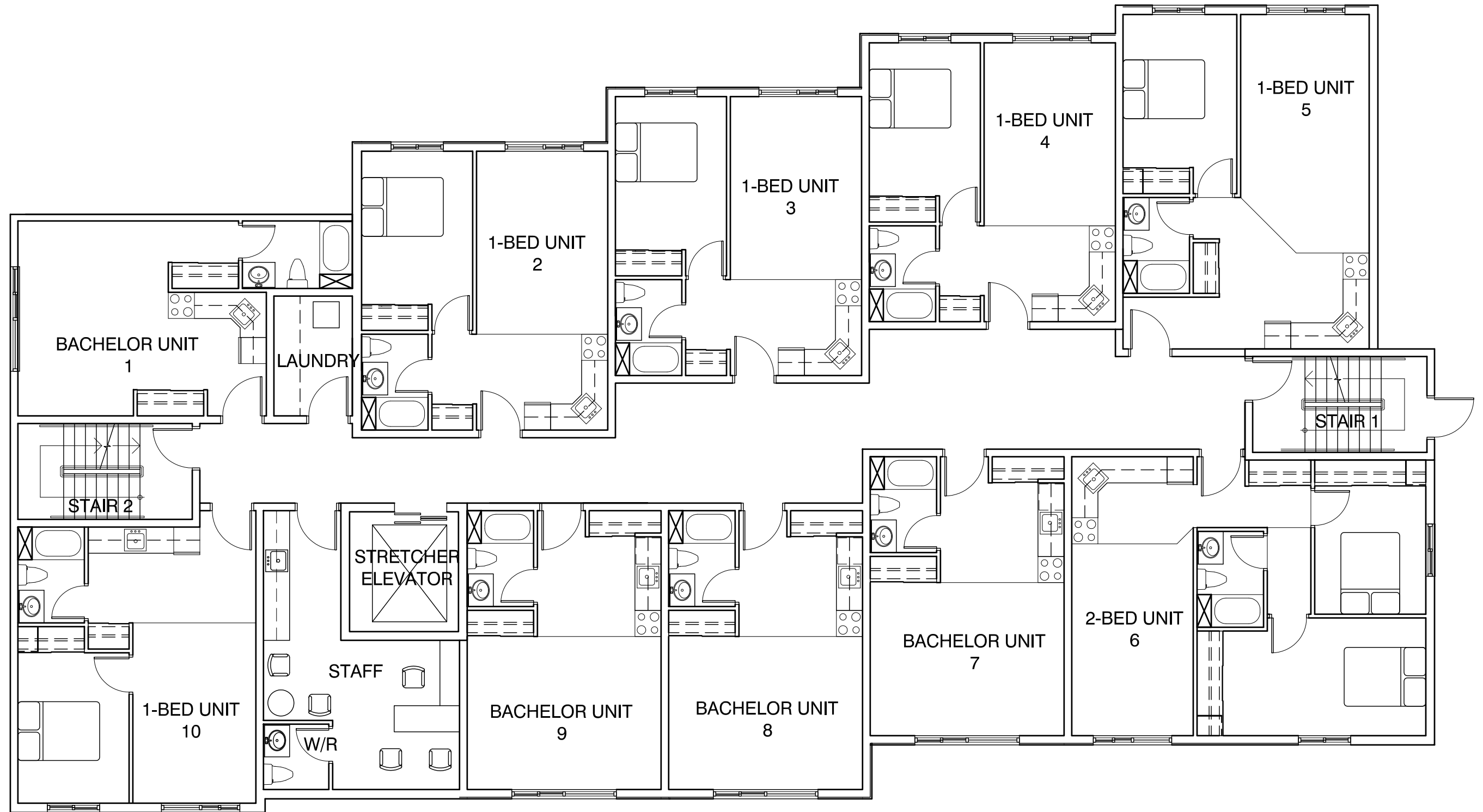


2nd & 3rd FLOOR PLAN; 11 BACHELORS

SCALE: 1/8" = 1'-0"

RETIREMENT HOME  
FISHER AVENUE  
OTTAWA, ONTARIO

LEONARD KOFFMAN, ARCHITECT  
DECEMBER 11, 2009



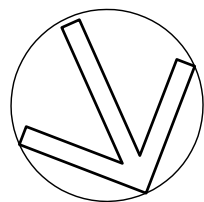
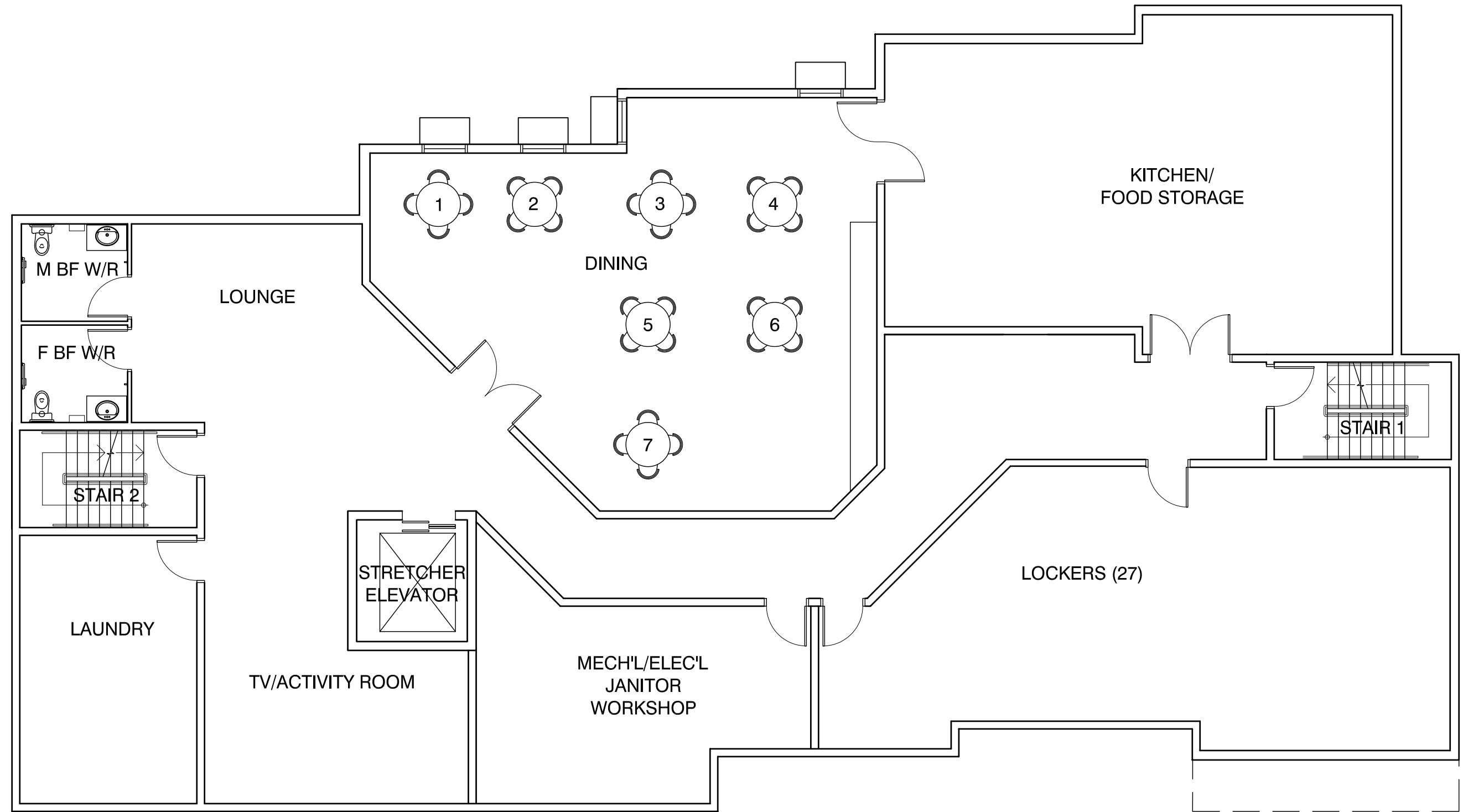
2nd & 3rd FLOOR PLAN; 4 BACHELOR, 5 1-BED, 1 2-BED

SCALE: 1/8" = 1'-0"

**RETIREMENT HOME  
FISHER AVENUE  
OTTAWA, ONTARIO**

LEONARD KOFFMAN, ARCHITECT  
DECEMBER 11, 2009

0934

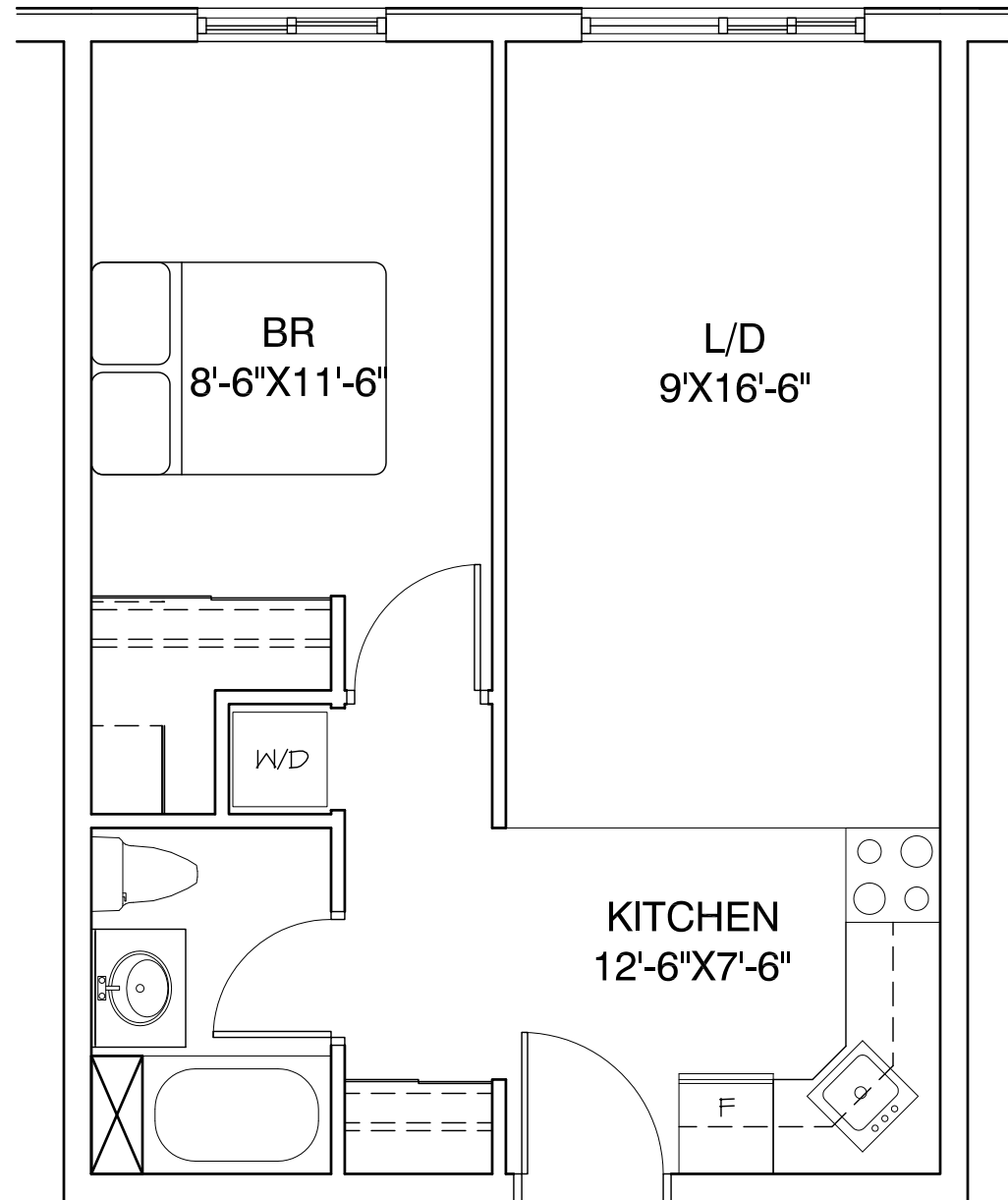


**BASEMENT PLAN**

SCALE: 1/8" = 1'-0"

**RETIREMENT HOME  
FISHER AVENUE  
OTTAWA, ONTARIO**

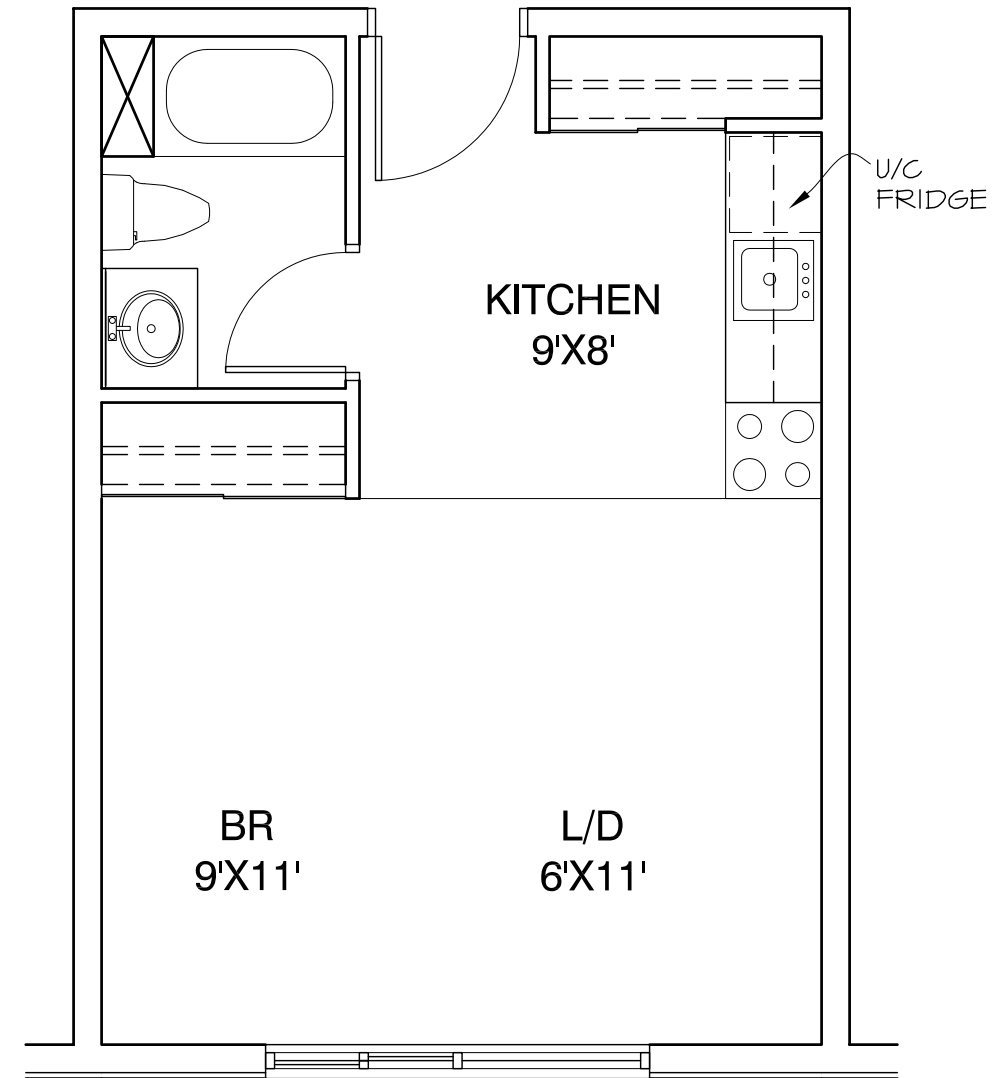
LEONARD KOFFMAN, ARCHITECT  
DECEMBER 11, 2009 0934



**1-BED UNIT PLAN**

SCALE: 1/4" = 1'-0"

18' x 24' = 432 SQ. FT. WITH W/D  
 18' x 22' = 396 SQ. FT. WITHOUT W/D



**BACHELOR UNIT PLAN**

SCALE: 1/4" = 1'-0"

15' x 21' = 315 SQ. FT.

**RETIREMENT HOME  
 FISHER AVENUE  
 OTTAWA, ONTARIO**

LEONARD KOFFMAN, ARCHITECT  
 DECEMBER 11, 2009